

Green Bike Lanes are intended to provide notice to drivers and bicyclists of areas where the two may come in conflict.

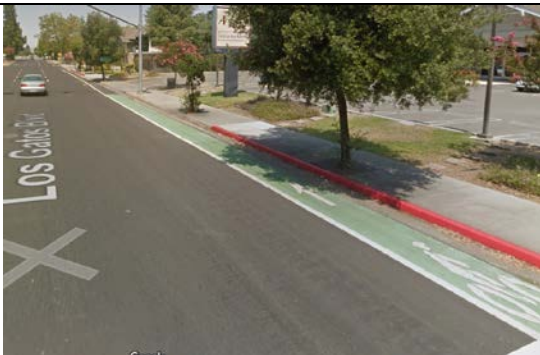
The white traffic paint bordering the bike lane is the enforceable traffic marking.



Solid Green with dashed white lines

Bicyclists have the right of way. Use caution in the merge areas.

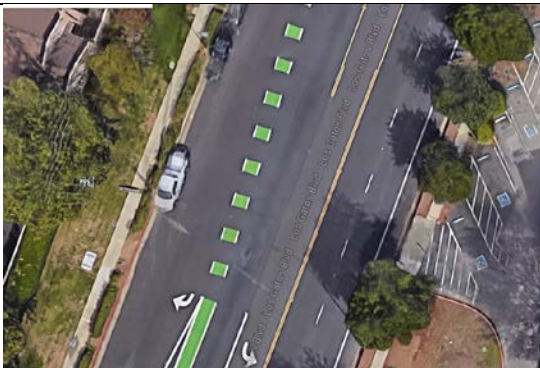
Motorists: When it is dashed, cars may enter or cross the bike lane when safe to do so.



Solid Green with solid white lines

Bicyclists have the right of way.

Motorists: When the white line is solid, cars may not cross, except to enter a driveway.



Dashed Green

The dashed green lanes are areas where cars and bikes are intended to cross paths.

Bicyclists have the right of way and may go straight with caution.

Motorists are expected to yield right of way to cyclist at these locations.

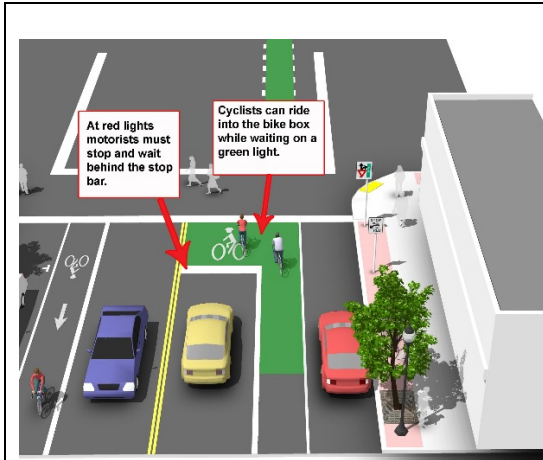


Buffered Bike Lane

Bicycle lanes paired with a designated buffer space separating the bicycle lane from the adjacent motor vehicle travel lane. This provides greater distance between motor vehicles and bicyclists.

Bicyclists have the right of way.

Motorists: The white line is solid so cars may not cross, except to enter a driveway.



Green Bike Box

A bike box is a designated area at the head of a traffic lane at a signalized intersection that provides bicyclists with a safe and visible way to get ahead of queuing traffic during the red signal phase.

It facilitates bicyclist left turn positioning at intersections during red signal indication and the transition from a right-side bike lane to a left-side bike lane during red signal indication.

Motorists: When the traffic signal is red, motorists must stop behind the white stop line. Don't stop on top of the green bike box. Keep it clear for cyclists to use. When the light turns green, motorists and cyclists may move through the intersection as usual, with cyclists going first.

Bicyclists: When the traffic signal is red, enter the bike box by approaching the green bike lane. When the light is green, proceed as normal.

Pictures courtesy of Google